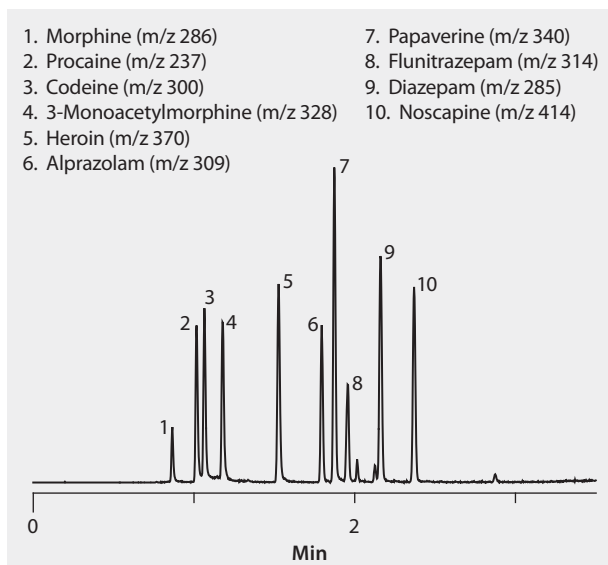


## UHPLC/MS Analysis of Heroin and Related Compounds on Titan™ C18

This method shows heroin and related compounds separated on a Titan C18 column and MS detection. Fluka LC-MS Ultra CHROMASOLV solvents were used to supply low background interference and low particulate contaminants for robust, trouble-free operation. Cerilliant CRMs provided reliable identification and quantification.

market focus	Forensics and Toxicology
column	Titan C18 5 cm x 2.1 mm I.D., 1.9 µm particles (577122-U)
mobile phase	[A] 5 mM ammonium acetate in 95:5, water:acetonitrile; [B] 5 mM ammonium acetate in 5:95, water:acetonitrile
gradient	0 to 100% B in 3 min, held at 100% B for 1 min
flow rate	0.6 mL/min
pressure	6770 psi (467 bar)
column temp.	35 °C
detector	MS-TOF, XIC
injection	0.5 µL
sample	1 µg/mL in 95:5, water:methanol
Application No.	G006116



### Related Products

**analytical column**

Titan™ C18 UHPLC Column, 1.9 micron ([Supelco 577122-U](#))

**mobile phase component**

Acetonitrile ([Fluka 14261](#))

Ammonium acetate ([Fluka 14267](#))

Water ([Fluka 14263](#))

**standard**

Alprazolam solution ([Cerilliant A-903](#))

Codeine solution ([Cerilliant C-006](#))

Diazepam solution ([Fluka D9900](#))

Flunitrazepam solution ([Cerilliant F-907](#))

Heroin solution ([Cerilliant H-038](#))

Morphine solution ([Cerilliant M-005](#))

Noscapine hydrochloride hydrate ([Fluka N9007](#))

Papaverine hydrochloride ([Sigma P3510](#))

Procaine hydrochloride ([Fluka 46608](#))