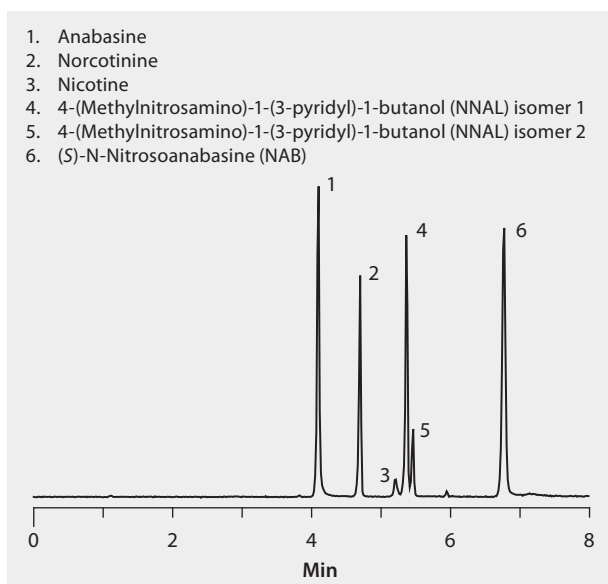


LC/MS Analysis of Nicotine and Metabolites on Kromasil® Eternity™ C18 (Analyte Set 1)

Nicotine and metabolites are shown here separated on a Kromasil Eternity C18 column, Fluka LC-MS Ultra CHROMASOLV solvents were used to supply low background interference and low particulate contaminants for robust, trouble-free operation. Cerilliant CRMs provided reliable identification and quantification.

market focus	Clinical
column	Kromasil Eternity C18, 10 cm x 3.0 mm I.D., 2.5 µm particles (K0897111)
mobile phase	[A] 10 mM ammonium acetate in water:methanol (95:5); [B] 10 mM ammonium acetate in water:methanol (10:90)
gradient	0% B held for 1 min; to 100% B in 8.5 min; 100% B held for 1 min
flow rate	0.4 mL/min
pressure	332 psi (23 bar)
column temp.	45 °C
detector	MS, ESI(+) TOF, EIC
injection	5 µL
sample	100 ng/mL in mobile phase A
Application No.	G005924



Related Products

analytical column

Kromasil® Eternity™ C18 HPLC Column ([Supelco K08670895](#))

mobile phase component

Ammonium acetate ([Fluka 14267](#))

Methanol ([Fluka 14262](#))

Water ([Fluka 14263](#))

standard

(+)-Anabasine hydrochloride solution ([Cerilliant A-097](#))

S(-)-Nicotine solution ([Cerilliant N-008](#))

(S)-N-Nitrosoanabasine (NAB) solution ([Cerilliant N-077](#))

(R,S)-Norcotinine solution ([Cerilliant N-079](#))