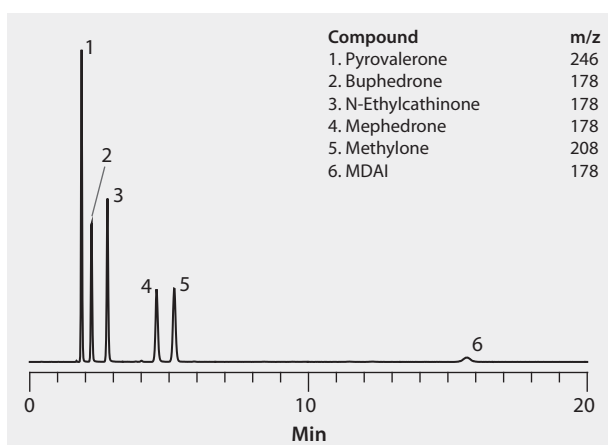


LC/MS Analysis of Illicit Bath Salts on Ascentis® Express HILIC, Set 4

HILIC mode operation on an Ascentis Express column provided baseline resolution of these bath salts, including isobaric compounds. Fluka LC-MS Ultra CHROMASOLV solvents were used to supply low background interference and low particulate contaminants for robust; trouble-free operation. Cerilliant CRMs provided reliable identification and quantification.

market focus	Forensics and Toxicology
column	Ascentis Express HILIC, 10 cm x 2.1 mm I.D., 2.7 µm particles (53939-U)
mobile phase	5 mM ammonium formate in [A] acetonitrile; [B] water; (98:2, A:B)
flow rate	0.6 mL/min
pressure	267 psi (18.4 bar)
column temp.	35 °C
detector	MS, ESI(+) TOF, Summed Ion Chromatogram
injection	2 µL
sample	500 ng/mL in acetonitrile
Application No.	G005913



Related Products

analytical column

Ascentis® Express HILIC, 2.7 Micron HPLC Column ([Supelco 53939-U](#))

application

LC/MS Analysis of Illicit Bath Salts on Ascentis® Express HILIC, Set 1 ([Supelco G005910](#))

LC/MS Analysis of Illicit Bath Salts on Ascentis® Express HILIC, Set 2 ([Supelco G005911](#))

LC/MS Analysis of Illicit Bath Salts on Ascentis® Express HILIC, Set 3 ([Supelco G005912](#))

mobile phase component

Acetonitrile ([Fluka 14261](#))

Ammonium formate ([Fluka 14266](#))

Water ([Fluka 14263](#))

standard

Buphedrone hydrochloride solution ([Cerilliant B-047](#))

N-Ethylcathinone hydrochloride solution ([Cerilliant E-080](#))

MDAI hydrochloride solution ([Cerilliant M-144](#))

Mephedrone hydrochloride solution ([Cerilliant M-138](#))

Methydone hydrochloride ([Cerilliant M-140](#))

Pyrovalerone hydrochloride solution ([Cerilliant P-081](#))