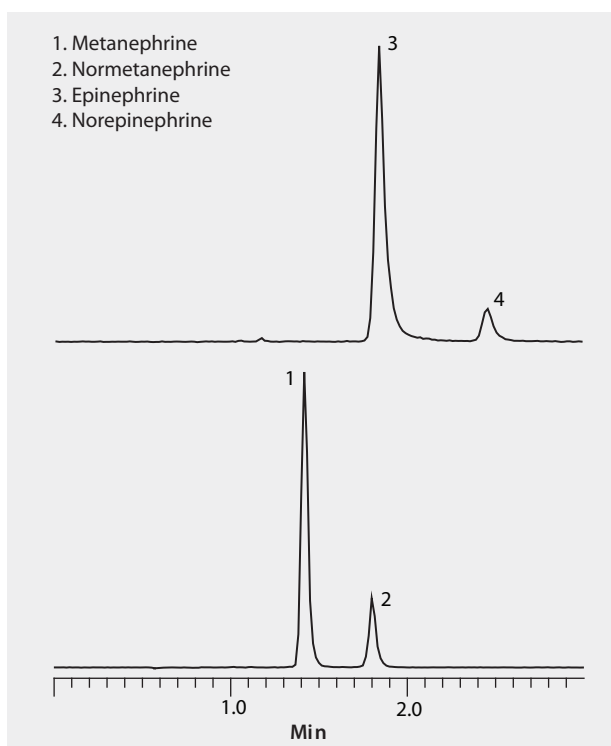


LC/MS/MS Analysis of Epinephrine, Metanephrine and Metabolites on Ascentis® Express OH5

HILIC mode on Ascentis Express OH5 provided rapid separation of neurotransmitters in highly MS-compatible mobile phases. Fluka LC-MS Ultra CHROMASOLV solvents were used to supply low background interference and low particulate contaminants for robust, trouble-free operation. Cerilliant CRMs provided reliable identification and quantification.

| | | |
|-----------------|-------|--|
| market focus | | Clinical |
| column | | Ascentis Express OH5, 10 cm x 2.1 mm I.D., 2.7 µm particles (53757-U) |
| mobile phase | | [A] 5 mM ammonium formate; [B] 5 mM ammonium formate in acetonitrile; (15:85, A:B) |
| flow rate | | 0.3 mL/min |
| pressure | | 1189 psi (82 bar) |
| column temp. | | 35 °C |
| detector | | MS ESI(+), 100-1000 m/z |
| injection | | 1 µL |
| sample | | 300 ng/mL each in acetonitrile |
| Application No. | | G005879 |



Related Products

- analytical column
Ascentis® Express OH5, 2.7 Micron HPLC Column ([Supelco 53757-U](#))
- mobile phase component
Acetonitrile ([Fluka 14261](#))
Ammonium formate ([Fluka 14266](#))
Water ([Fluka 14263](#))
- standard
Catecholamine Mix 1 (Epinephrines) solution ([Cerilliant C-109](#))
Catecholamine Mix 2 (Metanephrines) solution ([Cerilliant C-110](#))