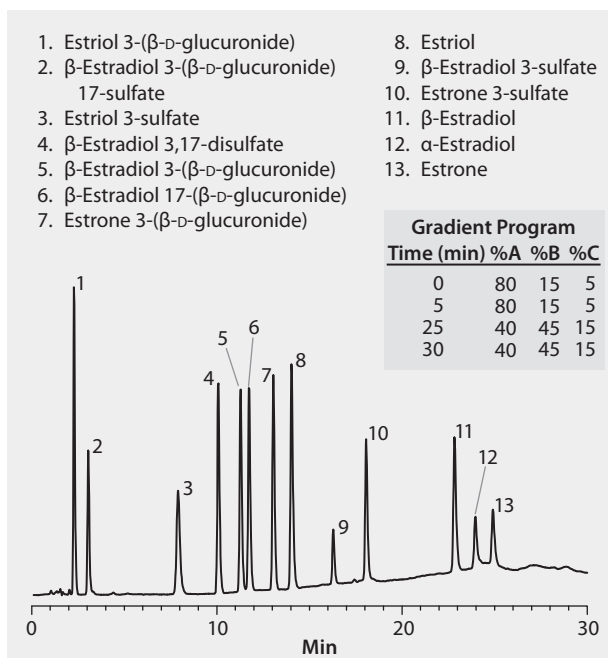


## HPLC Analysis of Conjugated Estrogens on Discovery® HS C18

market focus ..... Clinical; Life Science and Biopharma  
 column ..... Discovery HS C18, 15 cm × 4.6 mm I.D., 5 µm particles (568522-U)  
 mobile phase ..... [A] 10 mM potassium phosphate (pH 7.01 unadjusted); [B] acetonitrile; [C] methanol  
 gradient ..... 80% A, 15% B, 5% C, held for 5 min; to 40% A, 45% B, 15% C in 20 min; held for 5 min  
 flow rate ..... 1 mL/min  
 column temp. .... 30 °C  
 detector ..... UV, 220 nm  
 injection ..... 10 µL  
 sample ..... 10 µg/mL each in 60/40, water:acetonitrile  
 Application No. .... **G002155**



- |                                     |                          |
|-------------------------------------|--------------------------|
| 1. Estriol 3-(β-D-glucuronide)      | 8. Estriol               |
| 2. β-Estradiol 3-(β-D-glucuronide)  | 9. β-Estradiol 3-sulfate |
| 3. Estriol 3-sulfate                | 10. Estrone 3-sulfate    |
| 4. β-Estradiol 3,17-disulfate       | 11. β-Estradiol          |
| 5. β-Estradiol 3-(β-D-glucuronide)  | 12. α-Estradiol          |
| 6. β-Estradiol 17-(β-D-glucuronide) | 13. Estrone              |
| 7. Estrone 3-(β-D-glucuronide)      |                          |

**Related Products**

analytical column  
 Discovery® HS C18 HPLC Column ([Supelco 568522-U](#))  
 eluent  
 Acetonitrile ([Fluka 14261](#))  
 Methanol ([Sigma-Aldrich 34860](#))

**Related Products**

standard  
 α-Estradiol ([Sigma E8750](#))  
 β-Estradiol ([Cerilliant E-060](#))  
 β-Estradiol 3,17-disulfate dipotassium salt ([Sigma E1636](#))  
 β-Estradiol 3-(β-D-glucuronide) sodium salt ([Sigma E2127](#))  
 β-Estradiol 17-(β-D-glucuronide) ([Sigma E1127](#))  
 β-Estradiol 3-(β-D-glucuronide) 17-sulfate dipotassium salt ([Sigma E2128](#))  
 β-Estradiol 3-sulfate sodium salt ([Sigma E9505](#))  
 Estriol ([Cerilliant E-074](#))  
 Estriol 3-(β-D-glucuronide) sodium salt ([Sigma E2002](#))  
 Estriol 3-sulfate sodium salt ([Sigma E6375](#))  
 Estrone ([Cerilliant E-075](#))  
 Estrone 3-(β-D-glucuronide) sodium salt ([Sigma E1752](#))  
 Estrone 3-sulfate sodium salt ([Sigma E0251](#))