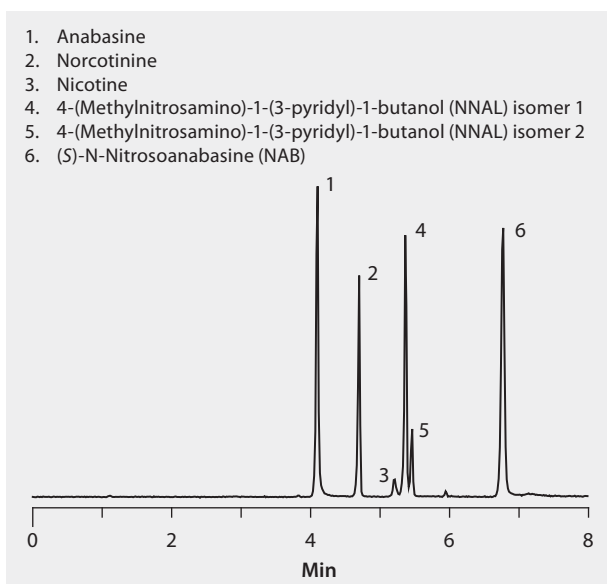


## LC/MS Analysis of Nicotine and Metabolites on Kromasil® Eternity™ C18 (Analyte Set 1)

Nicotine and metabolites are shown here separated on a Kromasil Eternity C18 column, Fluka LC-MS Ultra CHROMASOLV solvents were used to supply low background interference and low particulate contaminants for robust, trouble-free operation. Cerilliant CRMs provided reliable identification and quantification.

market focus	.....	Clinical
column	.....	Kromasil Eternity C18, 10 cm x 3.0 mm I.D., 2.5 µm particles (K0897111)
mobile phase	.....	[A] 10 mM ammonium acetate in water:methanol (95:5); [B] 10 mM ammonium acetate in water:methanol (10:90)
gradient	.....	0% B held for 1 min; to 100% B in 8.5 min; 100% B held for 1 min
flow rate	.....	0.4 mL/min
pressure	.....	332 psi (23 bar)
column temp.	.....	45 °C
detector	.....	MS, ESI(+) TOF, EIC
injection	.....	5 µL
sample	.....	100 ng/mL in mobile phase A
Application No.	.....	<a href="#">G005924</a>



### Related Products

- analytical column**  
 Kromasil® Eternity™ C18 HPLC Column ([Supelco K08670895](#))
- mobile phase component**  
 Ammonium acetate ([Fluka 14267](#))  
 Methanol ([Fluka 14262](#))  
 Water ([Fluka 14263](#))
- standard**  
 (+)-Anabasine hydrochloride solution ([Cerilliant A-097](#))  
 S(-)-Nicotine solution ([Cerilliant N-008](#))  
 (S)-N-Nitrosoanabasine (NAB) solution ([Cerilliant N-077](#))  
 (R,S)-Norcotinine solution ([Cerilliant N-079](#))