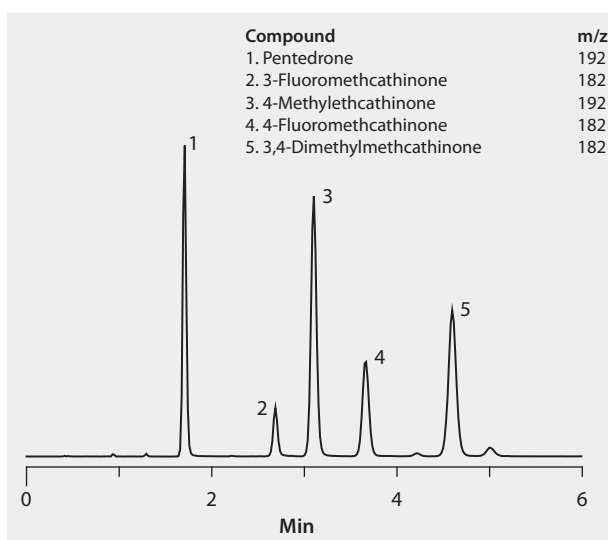


LC/MS Analysis of Illicit Bath Salts on Ascentis® Express HILIC, Set 3

HILIC mode operation on an Ascentis Express column provided baseline resolution of these bath salts, including isobaric compounds. Fluka LC-MS Ultra CHROMASOLV solvents were used to supply low background interference and low particulate contaminants for robust; trouble-free operation. Cerilliant CRMs provided reliable identification and quantification.

market focus	Forensics and Toxicology
column	Ascentis Express HILIC, 10 cm x 2.1 mm I.D., 2.7 µm particles (53939-U)
mobile phase	[A] 5 mM ammonium formate in acetonitrile; [B] water; (98:2, A:B)
flow rate	0.6 mL/min
pressure	267 psi (18.4 bar)
column temp.	35 °C
detector	MS, ESI(+) TOF, Summed Ion Chromatogram
injection	2 µL
sample	500 ng/mL in acetonitrile
Application No.	G005912



Related Products

analytical column

Ascentis® Express HILIC, 2.7 Micron HPLC Column ([Supelco 53939-U](#))

application

LC/MS Analysis of Illicit Bath Salts on Ascentis® Express HILIC, Set 1 ([Supelco G005910](#))

LC/MS Analysis of Illicit Bath Salts on Ascentis® Express HILIC, Set 2 ([Supelco G005911](#))

LC/MS Analysis of Illicit Bath Salts on Ascentis® Express HILIC, Set 4 ([Supelco G005913](#))

mobile phase component

Acetonitrile ([Fluka 14261](#))

Ammonium formate ([Fluka 14266](#))

Water ([Fluka 14263](#))

standard

3,4-Dimethylmethcathinone hydrochloride solution ([Cerilliant D-093](#))

3-Fluoromethcathinone hydrochloride solution ([Cerilliant F-016](#))

4-Fluoromethcathinone hydrochloride solution ([Cerilliant F-015](#))

4-Methylethcathinone hydrochloride solution ([Cerilliant M-155](#))

Pentedrone hydrochloride ([Cerilliant P-087](#))