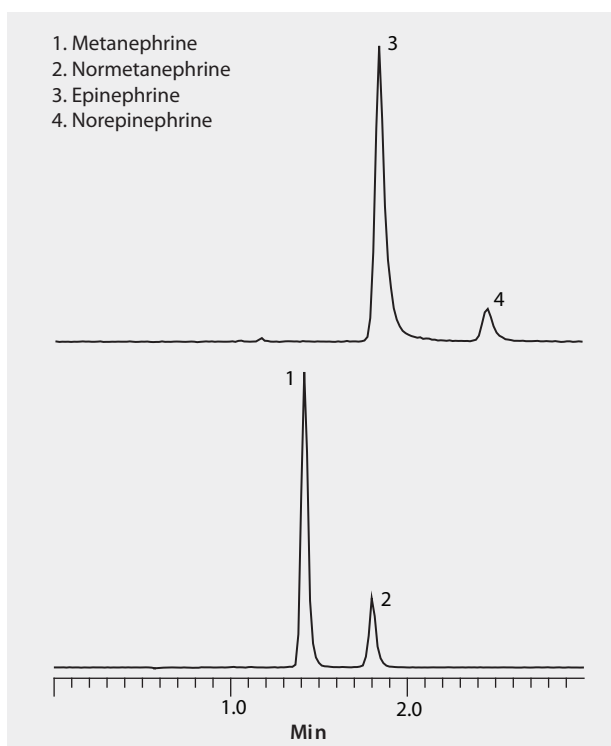


## LC/MS/MS Analysis of Epinephrine, Metanephrine and Metabolites on Ascentis® Express OH5

HILIC mode on Ascentis Express OH5 provided rapid separation of neurotransmitters in highly MS-compatible mobile phases. Fluka LC-MS Ultra CHROMASOLV solvents were used to supply low background interference and low particulate contaminants for robust, trouble-free operation. Cerilliant CRMs provided reliable identification and quantification.

market focus	.....	Clinical
column	.....	Ascentis Express OH5, 10 cm x 2.1 mm I.D., 2.7 µm particles (53757-U)
mobile phase	.....	[A] 5 mM ammonium formate; [B] 5 mM ammonium formate in acetonitrile; (15:85, A:B)
flow rate	.....	0.3 mL/min
pressure	.....	1189 psi (82 bar)
column temp.	.....	35 °C
detector	.....	MS ESI(+), 100-1000 m/z
injection	.....	1 µL
sample	.....	300 ng/mL each in acetonitrile
Application No.	.....	<a href="#">G005879</a>



### Related Products

**analytical column**

Ascentis® Express OH5, 2.7 Micron HPLC Column ([Supelco 53757-U](#))

**mobile phase component**

Acetonitrile ([Fluka 14261](#))

Ammonium formate ([Fluka 14266](#))

Water ([Fluka 14263](#))

**standard**

Catecholamine Mix 1 (Epinephrines) solution ([Cerilliant C-109](#))

Catecholamine Mix 2 (Metanephrines) solution ([Cerilliant C-110](#))