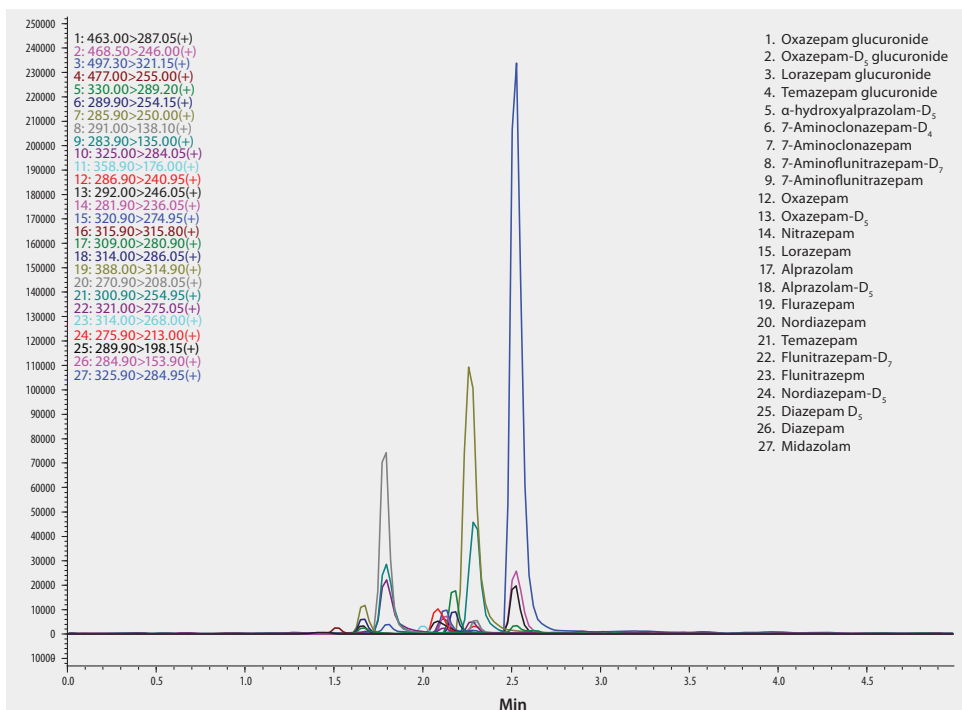


UHPLC/MS/MS Analysis of Benzodiazepines and Glucuronide Metabolites in Urine on Titan™ C18 after SPE using Supel™-Select HLB, β-Glucuronidase Enzyme Digestion

Urine samples were spiked with various glucuronide metabolites of benzodiazepines along with the parent drugs. The glucuronide metabolites were converted back to the parent drug using β-glucuronidase, then processed using SPE prior to LC/MS analysis. The Supel-Select HLB provided clean extracts and the Titan C18 provided rapid resolution of parent drugs and metabolites. Cerilliant CRMs provided reliable quantitation.

market focus	Forensics and Toxicology
sample preparation	SPE (Solid Phase Extraction)
SPE well plate	Supel-Select HLB 96-well plate, 60 mg/well (575662-U)
condition	1 mL acetonitrile, 1 mL water
sample addition	1.1 mL enzyme-digested urine
washing	1 mL water, 1 mL 25% methanol
elution	1 mL acetonitrile
column	Titan C18, 5 cm x 2.1 mm I.D., 1.9 μm particles (577122-U)
mobile phase	[A]: 5 mM ammonium formate [B]: 5 mM ammonium formate in acetonitrile:water (95:5)
gradient	10 to 90% B in 2.5 min, held for 0.5 min
flow rate	0.3 mL/min
column temp.	35 °C
detector	ESI(+), MRM
injection	2.0 μL
Application No.	G006291



Components

- Oxazepam glucuronide solution (Cerilliant O-023)
- Oxazepam-d₃ glucuronide (Cerilliant O-038)
- Lorazepam glucuronide solution (Cerilliant L-021)
- Diazepam solution (Cerilliant D-907)
- alpha-Hydroxyalprazolam solution (Cerilliant A-905)
- 7-Aminoclonazepam-d₄ solution (Cerilliant A-917)
- 7-Aminoclonazepam solution (Cerilliant A-916)
- 7-Aminoflunitrazepam-d₇ solution (Cerilliant A-925)
- 7-Aminoflunitrazepam solution (Cerilliant A-911)
- Oxazepam solution (Cerilliant O-902)
- Oxazepam-d₃ solution (Cerilliant O-901)
- Nitrazepam solution (Cerilliant N-906)

Components

- Lorazepam solution (Cerilliant L-901)
- Alprazolam solution (Cerilliant A-903)
- Alprazolam-d₃ solution (Cerilliant A-902)
- Flurazepam solution (Cerilliant F-003)
- Nordiazepam solution (Cerilliant N-905)
- Temazepam solution (Cerilliant T-907)
- Flunitrazepam-d₇ (Cerilliant F-915)
- Flunitrazepam solution (Cerilliant F-907)
- Nordiazepam-d₃ solution (Cerilliant N-911)
- Diazepam-d₃ solution (Cerilliant D-902)
- Diazepam solution (Cerilliant D-907)
- Midazolam solution (Cerilliant M-908)

Related Products

- analytical column**
- Titan™ C18 UHPLC Column, 1.9 micron (Supelco 577122-U)
- eluent**
- Acetonitrile (Fluka 14261)
- Ammonium formate (Fluka 14266)
- Water (Fluka 14263)
- enzyme**
- β-Glucuronidase from limpets (*Patella vulgata*) (Sigma G2174)
- SPE tube or plate**
- Supel™ - Select HLB SPE 96-well Plate (Supelco 575662-U)