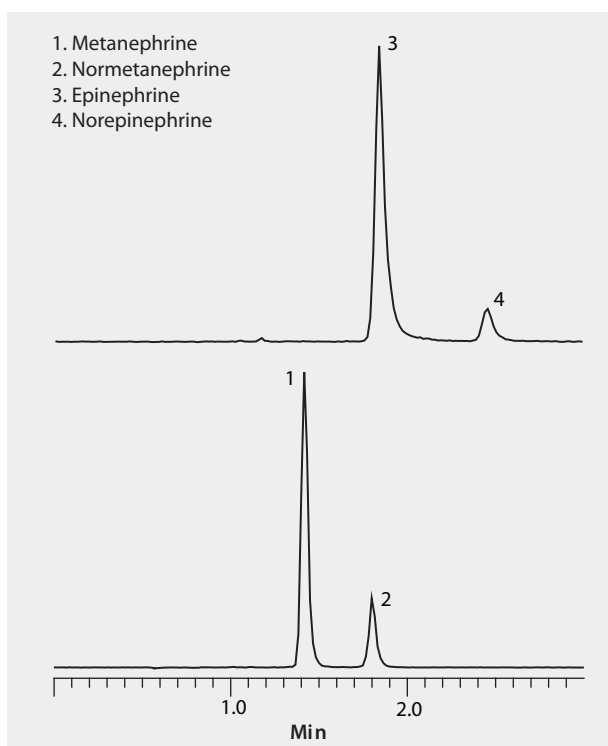


LC/MS/MS Analysis of Epinephrine, Metanephrine and Metabolites on Ascentis® Express OH5

HILIC mode on Ascentis Express OH5 provided rapid separation of neurotransmitters in highly MS-compatible mobile phases. Fluka LC-MS Ultra CHROMASOLV solvents were used to supply low background interference and low particulate contaminants for robust, trouble-free operation. Cerilliant CRMs provided reliable identification and quantification.

market focus Clinical column Ascentis Express OH5, 10 cm x 2.1 mm I.D., 2.7 µm particles (53757-U) mobile phase [A] 5 mM ammonium formate; [B] 5 mM ammonium formate in acetonitrile; (15:85, A:B) flow rate 0.3 mL/min pressure 1189 psi (82 bar) column temp. 35 °C detector MS ESI(+), 100-1000 m/z injection 1 µL sample 300 ng/mL each in acetonitrile Application No. [G005879](#)



Related Products

analytical column

Ascentis® Express OH5, 2.7 Micron HPLC Column ([Supelco 53757-U](#))

mobile phase component

Acetonitrile ([Fluka 14261](#))

Ammonium formate ([Fluka 14266](#))

Water ([Fluka 14263](#))

standard

Catecholamine Mix 1 (Epinephrines) solution ([Cerilliant C-109](#))

Catecholamine Mix 2 (Metanephrines) solution ([Cerilliant C-110](#))